

# Saint Paul Conservatory

FOR PERFORMING ARTISTS

## DROP-OFF AND PICK-UP INFORMATION

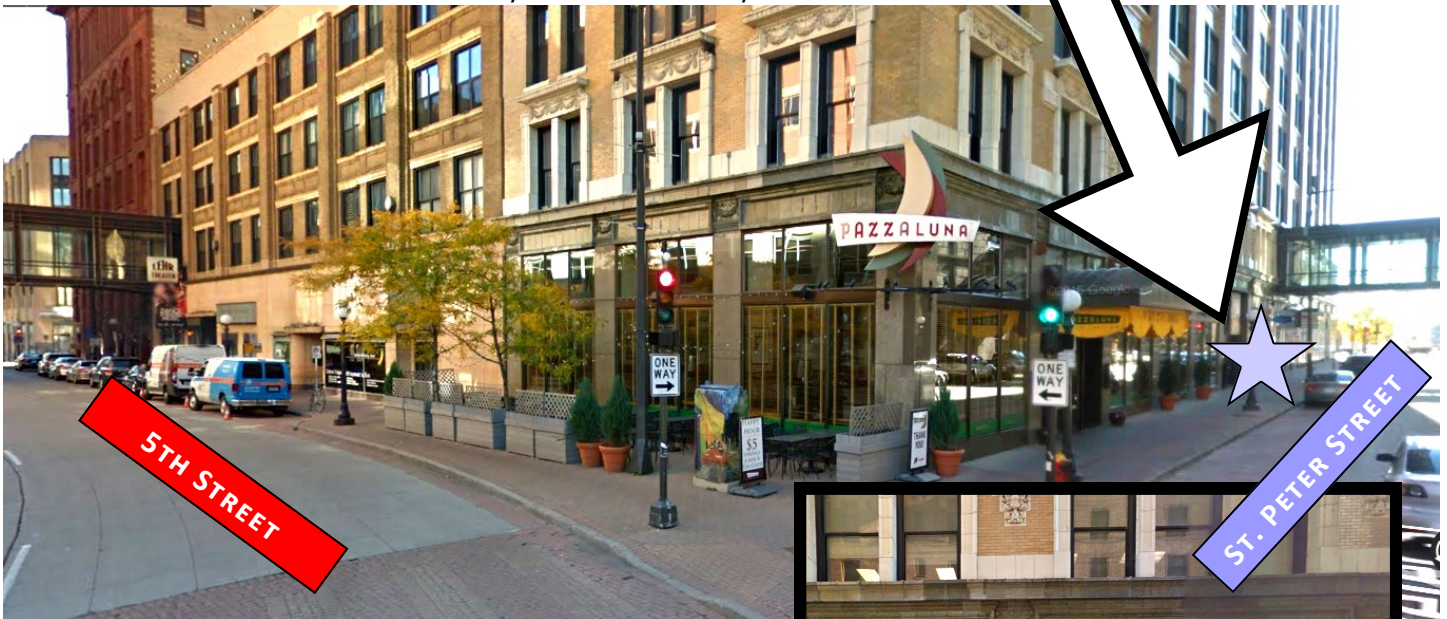
Our families can support us in striving to be good neighbors by assisting to maintain the flow of traffic when picking up and dropping off students.

**5th Street is heavily used and it presents a danger to have stopped cars in traffic lanes.**

**Cars that are double parked or disrupt traffic flow on 5th Street before and after school *may be ticketed.***

The St. Paul Police Department requests that we remind families that **there are safer drop off and pick-up areas on St. Peter Street between the Lowry Building and St. Paul Hotel.**

Students are able to access the school via the main lobby doors of the Lowry on St. Peter Street.



We appreciate your help to address this concern that has been brought to our attention to ensure we keep everyone safe!